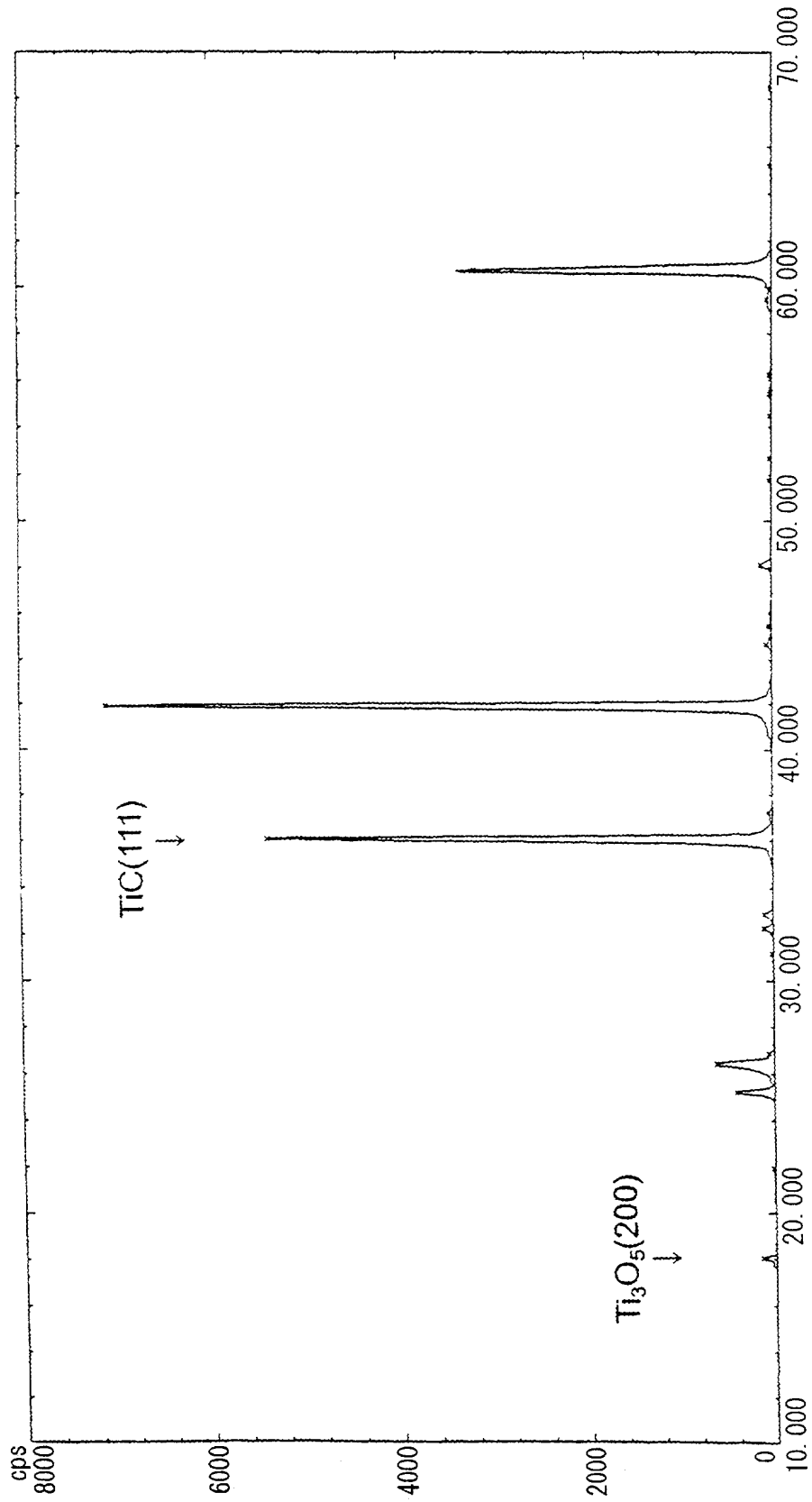
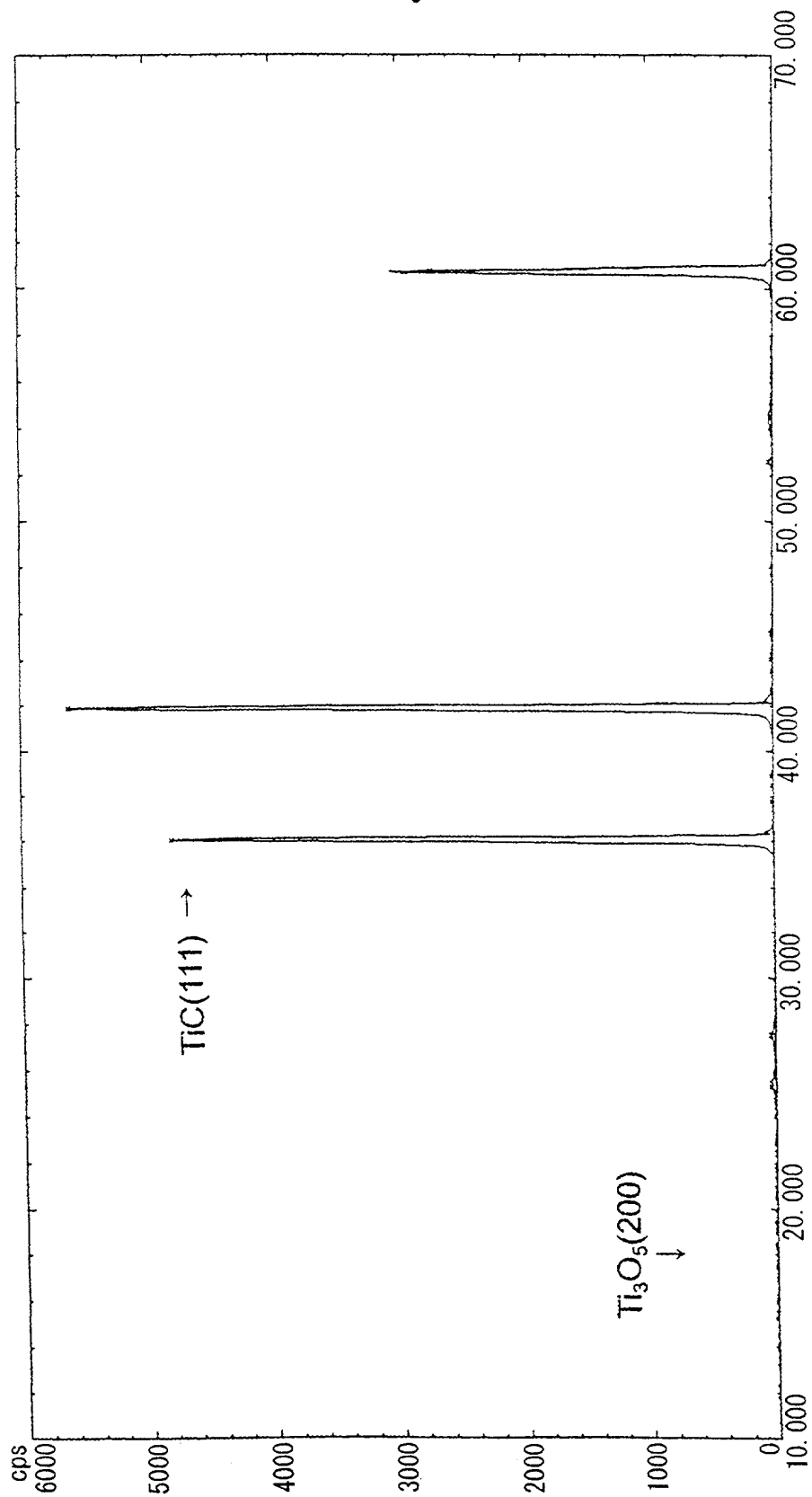


Fig. 1



FORPT 980366

Fig. 2



TOBET 990860

Fig. 3

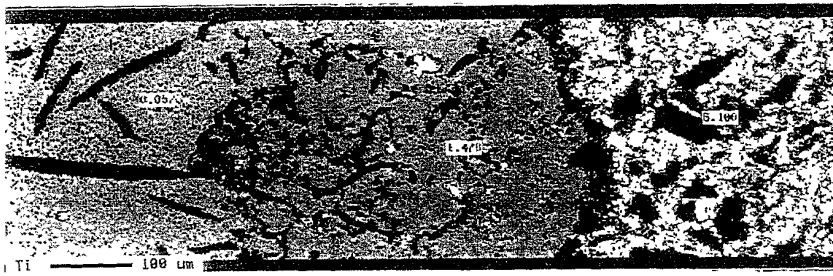
SEM



CP	Level	Area%
	1250	0.0
	1081	60.4
	1612	2.9
	1541	2.7
	1475	3.8
	1406	0.2
	1337	21.0
	1268	0.2
	1200	0.0
Area	1597	

(Melted pig iron) ← (Interface protective layer) → (Carbonaceous Refractory material)

Ti



Ti	Count	Area%
	10,000	2.5
	0,750	0.9
	2,500	1.1
	6,250	1.5
	5,000	1.5
	1,250	2.7
	2,500	2.0
	1,250	1.0
	0,000	55.1
Area	2,266	

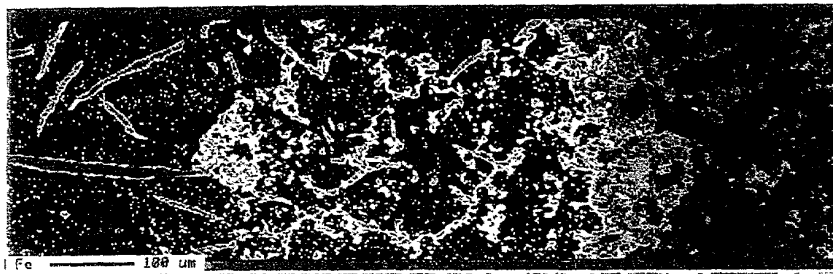
Protective layer : Ti 1.478 %

C



C	Level	Area%
	5000	13.9
	4437	1.0
	3075	1.0
	2312	1.2
	2250	1.2
	2107	1.1
	1625	1.6
	0062	2.0
	500	4.5
Area	6245	

Fe



Fe	Count	Area%
	100.00	1.7
	67.50	49.3
	25.00	4.9
	62.50	1.2
	50.00	2.6
	12.50	2.2
	25.00	2.0
	12.50	2.3
	0.00	9.1
	22.1	
Area	50.46	

0980366